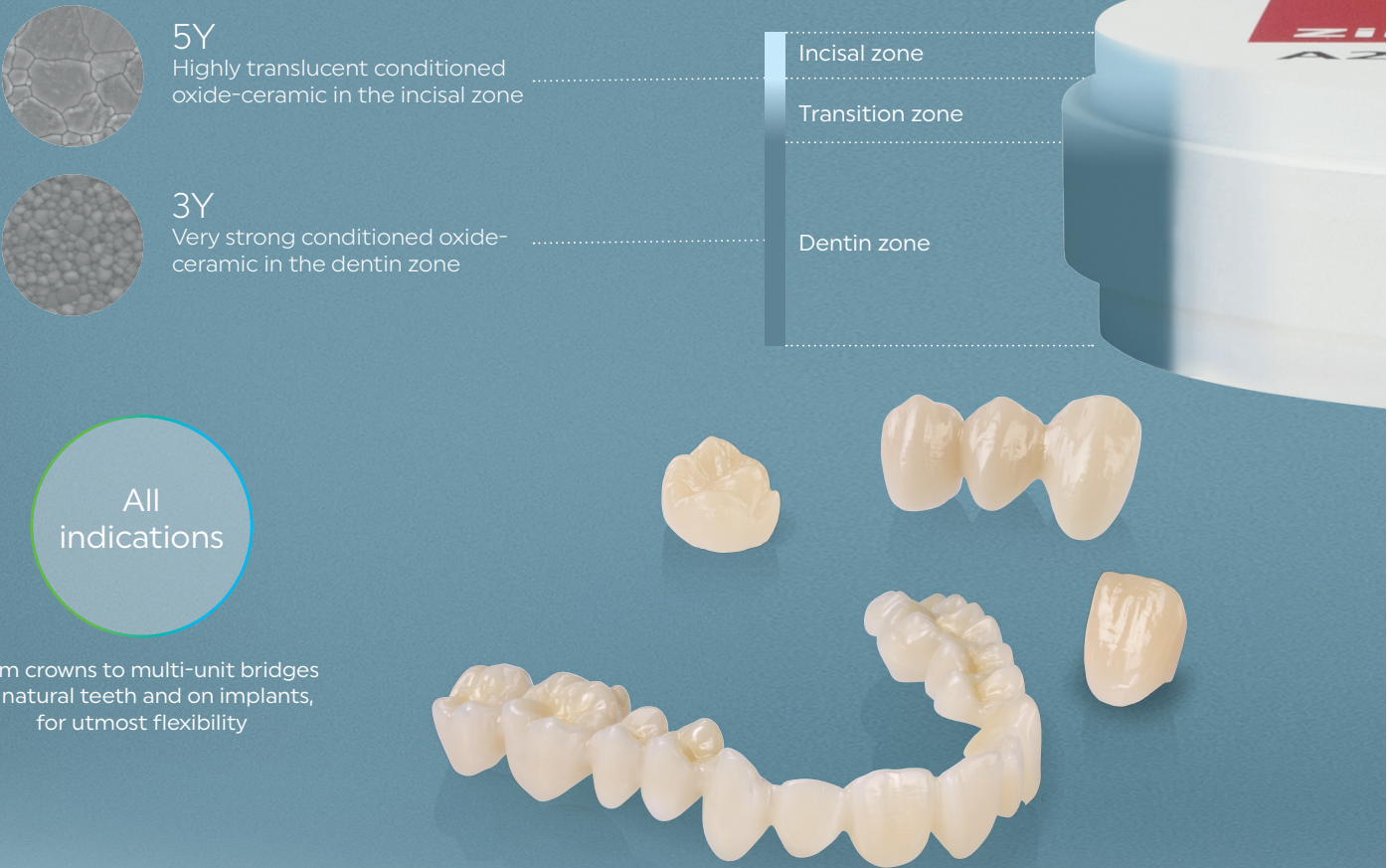


Gradient technology is at the heart of our Prime Zirconia

Gradient Technology (GT) involves innovative processing steps which allows two raw oxide-ceramic materials to be combined in order to produce exceptional properties.

- Optimized translucency
- Seamless progression of shade
- Accuracy of fit and no distortion

IPS e.max ZirCAD Prime Prime Zirconia for all indications



You can trust
IPS e.max® ZirCAD® Prime
in terms of quality, longevity,
stability and, above all,
esthetics. Prescribe our
Prime Zirconia today!

Contact us for more information!



United States: Ivoclar Vivadent | 175 Pineview Drive | Amherst | New York 14228
716-691-0010 | 800-533-6825 | Fax: 716-691-2285

Canada: Ivoclar Vivadent | 1 - 6600 Dixie Road | Mississauga | Ontario L5T 2Y2
905-670-8499 | 800-263-8182 | Fax: 905-670-3102

ivoclar.com

©2023 Ivoclar Vivadent, Inc. Ivoclar, ZirCAD, Prime and IPS e.max are trademarks of Ivoclar Vivadent, Inc. 75473 Rev 5.02/2023 14288



Expertise and Confidence: Prime Zirconia



Trust IPS e.max®ZirCAD® Prime and IPS e.max® ZirCAD® Prime Esthetic,
part of the e.max® family.

Prime Zirconia

IPS e.max ZirCAD Prime and IPS e.max ZirCAD Prime esthetic are redefining all-ceramics:

- As esthetic as lithium disilicate (LS2)
- As strong as zirconium oxide

Not all zirconia materials are the same. IPS e.max ZirCAD Prime family discs have a unique Gradient Technology for a seamless progression of shade.

Your dental laboratory will be pleased to inform you about our innovative IPS e.max Zirconia for fabricating highly esthetic crowns and multi-unit bridges.

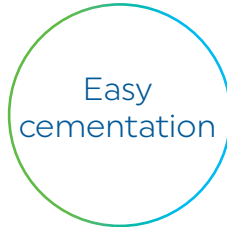
As a result of its versatility and esthetics, IPS e.max ZirCAD Prime and IPS e.max ZirCAD Prime esthetic are the materials of choice for multiple clinical indications.



IPS e.max ZirCAD Prime: 1200 MPa
IPS e.max ZirCAD Prime Esthetic: 850 MPa¹



Comparable to
Lithium disilicate (LS₂)



Conventional,
adhesive or self-adhesive



M. Spanopoulou, Greece

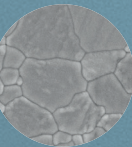


¹ Typical mean value of the biaxial strength (dentin), R&D Ivoclar Vivadent AG, Schaan, Liechtenstein

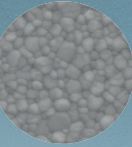
² Measurement of the fracture toughness according to the Vickers indentation test (dentin), R&D Ivoclar Vivadent AG, Schaan, Liechtenstein (2018)

IPS e.max® ZirCAD® Prime Esthetic

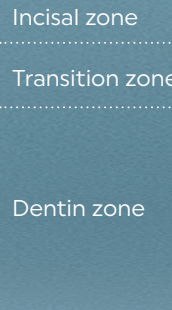
Prime zirconia for anterior restorations



5Y
Highly translucent conditioned
oxide-ceramic in the incisal zone



4Y
Strong conditioned oxide-
ceramic in the dentin zone



Maximum
esthetics



For esthetic restorations even on dark prepared teeth

IPS e.max ZirCAD Prime and IPS e.max ZirCAD Prime esthetic dentin zone has been optimized to achieve masking of even dark tooth preparations, while still achieving natural looking enamel esthetics due to the gradient technology.



Single tooth crown (21), IPS e.max® ZirCAD Prime BL1, veneered with IPS e.max® Ceram Dr C. Savas / Y. Momma, USA

For lifelike esthetics and precise shading

IPS e.max ZirCAD Prime and IPS e.max ZirCAD Prime esthetic can offer layer-free restorations, ensuring an unique seamless progression of shade, optimal translucency levels and precise shading. This provides the ideal basis for premium esthetics in monolithic, fully and partially veneered restorations.

Wall-thickness Guideline for reliable processes

In preparing teeth for restorations made of IPS e.max ZirCAD Prime and IPS e.max ZirCAD Prime esthetic, it is important to observe the general guidelines for all-ceramics, for example, rounded angles and edges, in addition to the required minimum wall-thickness (specifications in mm for monolithic restorations).

